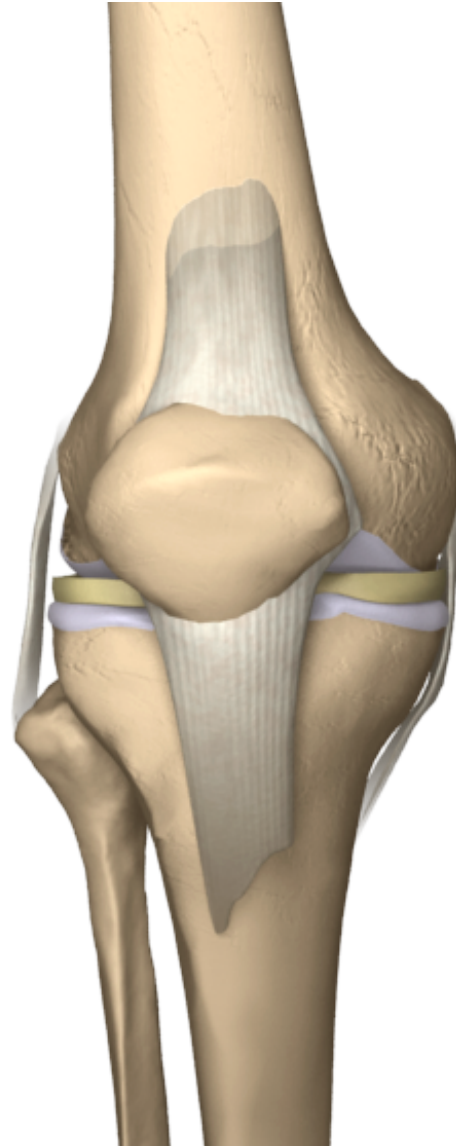
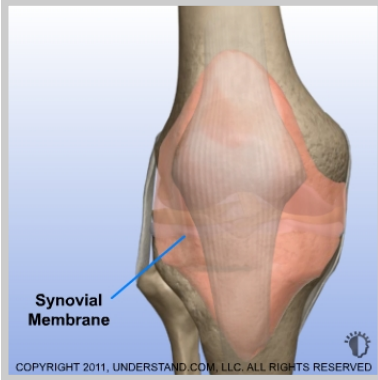


## Synovial Problems - Removal of Inflamed Synovium

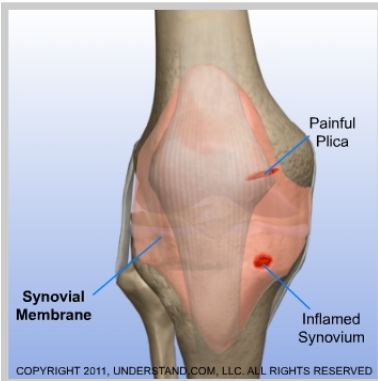
The synovium membrane is found in joints like your knee and shoulder. This thin membrane surrounds the inner lining of your joint and may have folds and fringes. Its main function is to create synovial fluid which helps nourish and lubricate your joint.





### ***Removal of Inflamed Synovium Introduction***

The synovium membrane is found in joints like your knee and shoulder. This thin membrane surrounds the inner lining of your joint and may have folds and fringes. Its main function is to create synovial fluid which helps nourish and lubricate your joint.



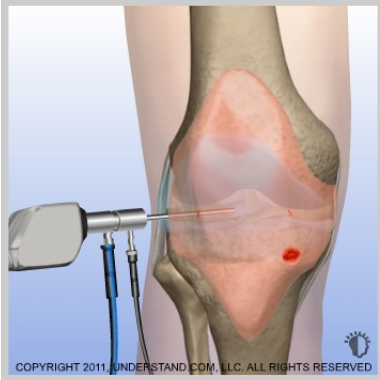
### ***Synovial Problems***

When part of your synovium becomes inflamed, it can cause your entire joint to swell and become tender. Your plica is a fold within the synovium that is located near the knee cap. When your knee cap glides back and forth, it can pinch the plica causing pain.



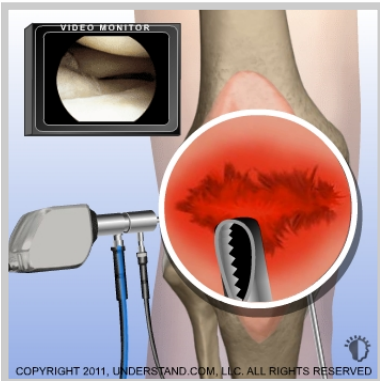
### ***Incisions***

Small incisions (portals) are made around the joint. The scope and surgical instruments will go into these incisions.



### **Visualization**

The scope is inserted into the knee. Saline solution flows through a tube (cannula) and into the knee to expand the joint and to improve visualization. The image is sent to a video monitor where the surgeon can see inside the joint.



### **Removal**

A specialized surgical instrument is used to remove the inflamed synovium.



### **End of Procedure**

After the removal is finished, the surgical instruments are removed and the procedure is completed.